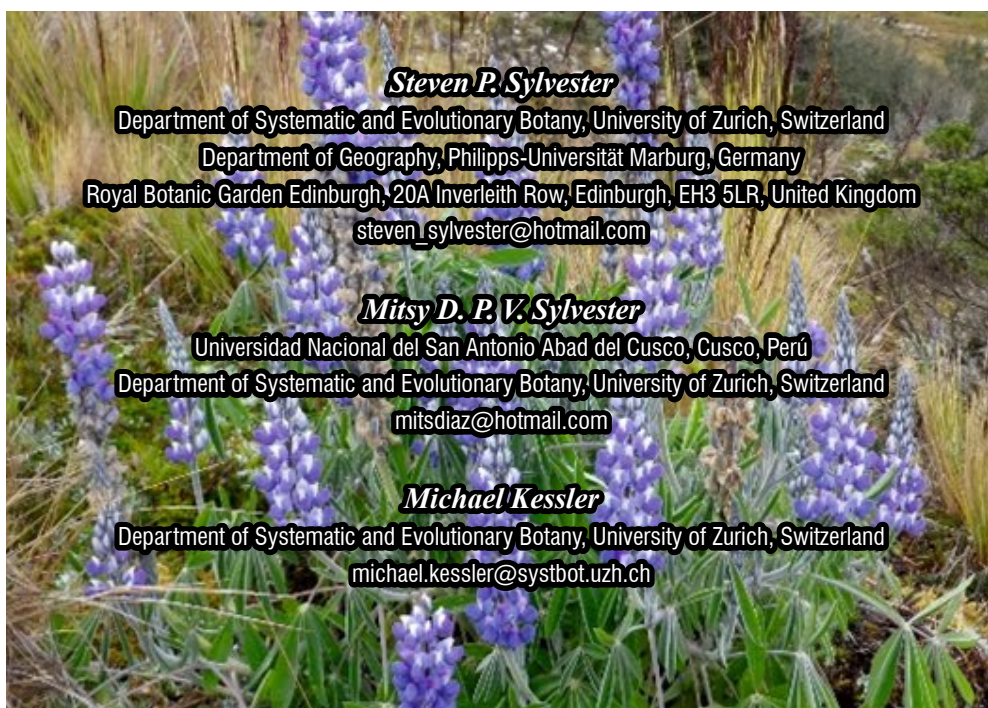


Four new and five overlooked records of vascular plants from high elevation puna grasslands of the southern Peruvian Andes

Cuatro nuevos registros y cinco revisiones de plantas vasculares de pastizales de puna de gran altitud en los Andes del sur peruano



Steven P. Sylvester

Department of Systematic and Evolutionary Botany, University of Zurich, Switzerland
Department of Geography, Philipps-Universität Marburg, Germany
Royal Botanic Garden Edinburgh, 20A Inverleith Row, Edinburgh, EH3 5LR, United Kingdom
steven_sylvester@hotmail.com

Mitsy D. P. V. Sylvester

Universidad Nacional del San Antonio Abad del Cusco, Cusco, Perú
Department of Systematic and Evolutionary Botany, University of Zurich, Switzerland
mitsdiaz@hotmail.com

Michael Kessler

Department of Systematic and Evolutionary Botany, University of Zurich, Switzerland
michael.kessler@systbot.uzh.ch



Abstract

We present 4 new and 5 overlooked records of vascular plant species for Peru from high elevation puna grasslands in the Urubamba and Vilcabamba Cordilleras, southern Peru. The new species records are: *Lasiocephalus lingulatus* (Asteraceae); *Cardamine vulgaris* (Brassicaceae); *Lupinus herzogii*, *Lupinus soratensis* (Fabaceae). Other species records, i.e., *Calamagrostis sclerantha*, *Festuca soukupii* (Poaceae); *Aphanes parvula*, *Lachemilla tanacetifolia* (Rosaceae), and *Valeriana mandonii* (Valerianaceae), that are mentioned in literature for Peru but have not been acknowledged by the Peru Checklist or the *Catalogue of the Flowering Plants and Gymnosperms of Peru* are also included. Previous knowledge on the distribution of these species is discussed.

Keywords: records, vascular plants, puna, southern Peruvian Andes.

Resumen

Presentamos 4 nuevos registros y 5 revisiones de registros de especies de plantas vasculares para Perú de pastizales de puna de gran altitud en las cordilleras de Urubamba y Vilcabamba, del sur de Perú. Los nuevos registros de especies son: *Lasiocephalus lingulatus* (Asteraceae); *Cardamine vulgaris* (Brassicaceae); *Lupinus herzogii*, *Lupinus soratensis* (Fabaceae). Otros registros de especies: *Calamagrostis sclerantha*, *Festuca soukupii* (Poaceae); *Aphanes parvula*, *Lachemilla tanacetifolia* (Rosaceae), y *Valeriana mandonii* (Valerianaceae), que son mencionados en la literatura para Perú, pero que no han sido reconocidos por el Checklist de Perú o por el *Catálogo de las angiospermas y gimnospermas del Perú*, están también incluidos. El conocimiento previo sobre la distribución de estas especies está en discusión.

Palabras clave: registros, plantas vasculares, puna, Andes del sur peruano.

Introduction

High Andean puna grasslands, found above the upper forest-line (ca. > 3800 m.a.s.l.) from northern Peru to Chile (Wilcox *et al.*, 1986; Garcia & Beck, 2006; Montesinos-Tubée *et al.*, 2015 and references therein), have received relatively little floristic attention compared with the paramo grasslands of north-western South America (e.g. Luteyn, 1999; Madriñán *et al.*, 2013; W³TROPICOS-Paramo Flora, 2017). Nevertheless, our recent research over a relatively small area in the southern Peruvian Andes highlights that the high elevation puna remains a veritable treasure trove of taxonomic and ecological novelties waiting to be discovered (Heitkamp *et al.*, 2014; Kessler *et al.*, 2014; Sylvester, 2014; Sylvester *et al.*, 2014a,b; Pfanzelt *et al.*, 2015; Sundue *et al.*, 2015; Ospina *et al.*, 2016; Sylvester *et al.*, 2016a,b). Here we present

4 new records and 5 overlooked records, belonging to 6 families and 8 genera, of vascular plant species for Peru that we discovered during botanical exploration of the high puna of southern Peru and discuss previous knowledge on the distribution of these species.

Material and methods

The new and overlooked records were recovered among collections made in the high elevation puna grasslands of the Cordilleras Urubamba and Vilcabamba, southern Peru, between 2010 and 2013, as part of a larger ecological project to reconstruct the potential natural vegetation and soils of these Andean landscapes (see Heitkamp *et al.*, 2014 and Sylvester *et al.*, 2014a for preliminary studies). Species names were checked against the *Catalogue of the Flowering Plants and Gymnosperms of Peru* (Brako & Zarucchi, 1993), additions

to this (Vásquez *et al.*, 2002; Ulloa Ulloa *et al.*, 2004; Smith *et al.*, 2005; Rodríguez *et al.*, 2006; Salvador *et al.*, 2008; Linares *et al.*, 2010; Huamantupa *et al.*, 2014; Gonzáles *et al.*, 2011, 2016; Sylvester *et al.*, 2016a), and the online checklist for Peru (W³TROPICOS-Peru Checklist, 2017).

Results

Results: New species records for Peru

The 4 new species records for Peru belong to the genera: *Lasiocephalus* (Asteraceae), *Cardamine* (Brassicaceae) and *Lupinus* (Fabaceae).

ASTERACEAE

Lasiocephalus lingulatus Schldl., Mag. Neuesten Entdeck. Gesammten Naturk. Ges. Naturf. Freunde Berlin 8: 309. 1814. Fig. 1a.

LECTOTYPE: ECUADOR. *Humboldt s.n.* in Herb. Willd. Cat. No. 16435 (Lectotype: B). Lectotype chosen by Cuatrecasas (1978) but indicated as holotype.

Peruvian specimen examined: Dpto. Cusco, prov. La Convención, distrito Vilcabamba, large prominent ledge on the south facing cliff at the end of the Totorapurkay valley, 4 km east of the Totorapurkay village, 4536 m, 13°11'00.1''S, 73°03'07.3''W, 3-V-2013, *S. P. Sylvester 1880* (K!, LPB!, Z!).

Notes: Previously considered endemic to the paramos of Ecuador (Luteyn, 1999; Jørgensen & Ulloa Ulloa, 1994). This species was found to be locally frequent in undisturbed open *Polylepis* woodland intermixed with *Calamagrostis* and *Festuca* tussock grassland.

BRASSICACEAE

Cardamine vulgaris Phil., *Linnaea* 28: 665. 1858. Fig. 1b.

TYPE: CHILE. *Philippi s.n.* (Holotype: B).

Peruvian specimen examined: Dpto. Cusco, prov. La Convención, distrito Santa Teresa, grazed slopes, nestled in-between rocks, in the central Phacchaq valley on the east side of the river, Yanama, 4245 m, 13°15'40.2''S, 72°50'18.5''W, 4-V-2012, *S. P. Sylvester 1545* (CUZ!, MO!, Z!).

Notes: Previously known from Argentina and Chile (Zuloaga & Morrone, 1997). TROPICOS.ORG (2017) also lists the specimen *Sagástegui et al. 12095* for the region of Cajamarca, prov. Celendin. This species was found infrequent in open grazed puna grassland.

FABACEAE

Lupinus herzogii Ulbr., *Meded. Rijks-Herb.* 27: 44. 1915. Fig. 1c-d.

TYPE: BOLIVIA. 4100 m, I-1911, *Herzog 2253* (Holotype: B; Isotype: L).

Peruvian specimens examined: Dpto. Cusco, prov. Calca, distrito Calca, the grassy grazed land found to the immediate east of the prominent tower known by locals as "Kontorqayku" 5 km northeast of Huarán, 4248 m, 13°16'07.0''S, 72°01'07.2''W, 25-IV-2011, *S. P. Sylvester 1153* (CUZ!, Z!); distrito Calca, the *Polylepis* forest found to the immediate east of the prominent tower known by locals as "Kontorqayku" 5 km northeast of Huaran, 4310 m, 13°16'03.7''S, 72°01'02.0''W, 2-VI-2011, *S.P. Sylvester 1341* (CUZ!, Z!); distrito Calca, on the edge of the Wakapacana *Polylepis subsericans* forest on the eastern side of the valley 7.2 km and 10°N from Huaran., 4681 m, 13°15'04.6''S, 72°00'55.1''W, 18-VII-2011, *S. P. Sylvester 1353* (CUZ!, Z!); distrito Calca, upper Potreros forest on the north facing mountainside above the main Potreros forest, 4 km southwest of Cancha Cancha village, Huarán, 4726 m, 13°15'46.0''S,

72°02'51.2"W, 24-VII-2011, *S. P. Sylvester* 1363 (CUZ!, Z!); prov. La Convención, distrito Santa Teresa, grazed slopes in the central Phacchaq valley on the east side of the river, Yanama, 4236 m, 13°15'43.7"S, 72°50'18.6"W, 3-V-2012, *S. P. Sylvester* 1538 (CUZ!, Z!); distrito Santa Teresa, grazed slopes in the central Phacchaq valley on the east side of the river, Yanama, 4268 m, 13°15'40.1"S, 72°50'17.4"W, 19-V-2012, *S. P. Sylvester* 1619 (CUZ!, Z!); distrito Santa Teresa, grazed slopes at the topmost eastern portion of the Phacchaq valley, 8.5 km north of Yanama, 4276 m, 13°15'27.7"S, 72°50'23.8"W, 31-V-2013, *S.P. Sylvester* 2188 (LPB!, Z!); distrito Vilcabamba, grazed slopes towards the top of the Totora-Purkay valley, 3km east of the Totora-Purkay village, 4159 m, 13°10'51.1"S, 73°03'34.2"W, 8-V-2013, *S. P. Sylvester* 1966 (LPB!, Z!); prov. Urubamba, distrito Urubamba, Area de Conservacion Protegida Mantabay, 10 km up the valley from Yanahuara, by the side of Laguna Manalloqsa in the small valley 3 km east of Laguna Ipsaycocha, ledges on cliff side 250°W of Lago Manalloqsa, further down gully from the large *Polylepis* forest, 4802 m, 13°12'08.3"S, 72°08'44.4"W, 3-II-2011, *S.P. Sylvester* 514 (CUZ!, Z!).

Notes: Previously considered endemic to Bolivia (Jørgensen *et al.*, 2014, 2015 and onwards). This species is common in both the heavily grazed and fairly undisturbed puna tussock grasslands of both the Cordillera Urubamba and Vilcabamba, where it appears to be unpalatable to livestock (*S. P. Sylvester pers. observation*).

Lupinus soratensis Rusby, Bull. New York Bot. Gard. 6 (22): 510. 1910.

TYPE: BOLIVIA. Sorata, 7500 ft, 4 Sept 1901, R. S. Williams 2430 (Holotype: NY; Isotypes: K, NY, US). Fig. 1e-f.

Peruvian specimens examined: Dpto.

Cusco, prov. La Convención, distrito Santa Teresa, on the slopes below the pass linking Yanama with Totora, 4110 m, 13°19'30.1"S, 72°47'08.4"W, 25-IV-2012, *S.P. Sylvester* 1448 (CUZ!, Z!); distrito Santa Teresa, grazed slopes in the central Phacchaq valley on the east side of the river, Yanama, 4200 m, 13°15'59.8"S, 72°50'19.1"W, 29-IV-2012, *S. P. Sylvester* 1466 (CUZ!, Z!); distrito Santa Teresa, grazed slopes in the upper Phacchaq valley on the east side of the river, Yanama, 4500 m, 13°14'37.9"S, 72°50'16.2"W, 20-V-2012, *S.P. Sylvester* 1624 (CUZ!, Z!).

Notes: Previously considered endemic to Bolivia (Jørgensen *et al.*, 2014, 2015 and onwards). This woody shrub can grow as high as 3 m and forms dense thickets (Fig. 1e). It is common in heavily grazed puna grasslands of the Cordillera Vilcabamba, appearing to be unpalatable to livestock (*S. P. Sylvester pers. observation*). Flowers observed to be visited by beetles (Fig. 1f).

Results: Overlooked Species Records for Peru

Certain species were discovered that were not included in the Catalogue of the Flowering Plants and Gymnosperms of Peru (Brako & Zarucchi, 1993), additions to this (Vásquez *et al.*, 2002; Ulloa Ulloa *et al.*, 2004; Smith *et al.*, 2005; Rodríguez *et al.*, 2006; Salvador *et al.*, 2008; Linares *et al.*, 2010; Huamantupa *et al.*, 2014; Gonzáles *et al.*, 2011, 2016; Sylvester *et al.*, 2016a), or the online checklist for Peru (W³TROPICOS-Peru Checklist, 2017), but were mentioned in taxonomic treatments that were overlooked by the aforementioned works. These belong to the genera: *Calamagrostis*, *Festuca* (Poaceae), *Aphanes*, *Lachemilla* (Rosaceae), and *Valeriana* (Valerianaceae).

POACEAE

Calamagrostis sclerantha Hack.,

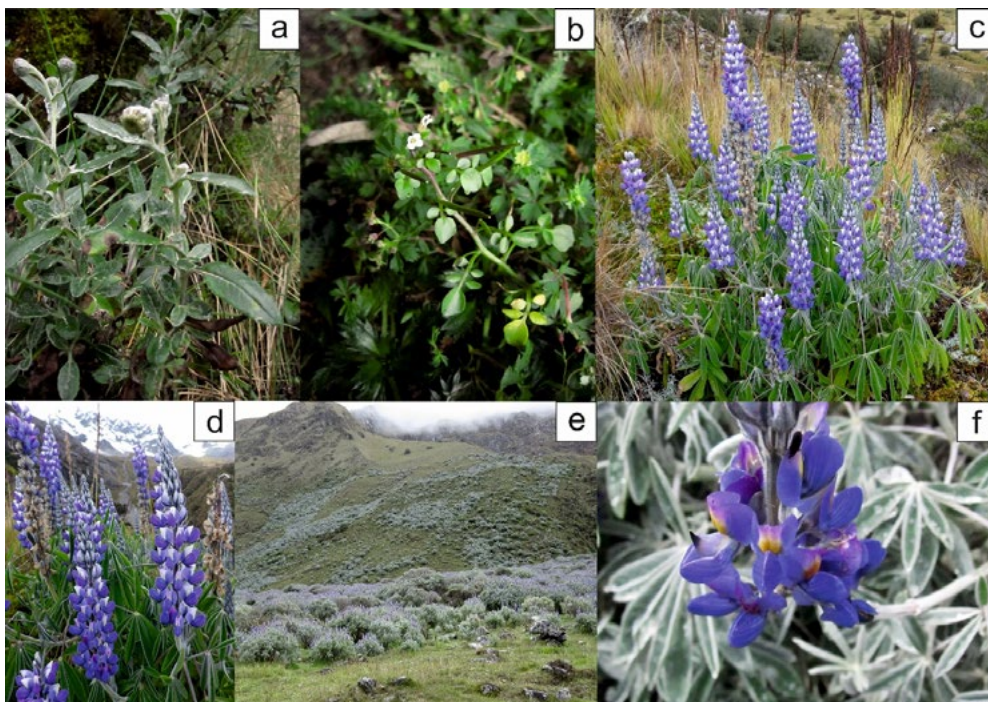


Fig. 1. Photographs of the news species records for Peru. a. *Lasiocephalus lingulatus*, S.P. Sylvester 1880. b. *Cardamine vulgaris*, S.P. Sylvester 1545. c-d. *Lupinus herzogii*, S. P. Sylvester 1966. e-f. *Lupinus soratensis*, S. P. Sylvester 1448.

Oesterr. Bot. Z. 52 (3): 108. 1902.

TYPE: ARGENTINA. Salta, Nevado del Castillo, 19-23-III-1873, Hieronymus & Lorentz 60 (Holotype: G; Isotypes: B, IT-BAA4417 (photo ex B), LIL (fragm.), US-1127175 (fragm. ex B), US-3048361, W).

Peruvian specimens examined: Dpto. Cusco, prov. La Convención, distrito Vilcabamba, grazed slopes towards the top of the Totorá-Purkay valley, 3 km east of the Totorá-Purkay village, 4159 m, 13°10'51.1"S, 73°03'34.2"W, 8-V-2013, S. P. Sylvester 1977 (LPB!, USM!, Z!).

Notes: Found locally common in grazed puna grassland at the one site in distrito Vilcabamba where it was encountered. This species is mentioned to occur in Argentina, Bolivia and Peru in the Catalogue of New World Grasses (Soreng & Greene, 2003;

Soreng *et al.*, 2003 and onwards). As the only Peruvian specimen, Bradley C. Bennett 2494 (MO), was collected from Dpto. Puno, prov. Sandia, our specimen from Dpto. Cusco extends the westerly distribution of this species ca. 400 km.

***Festuca soukupii* Stančík**, Folia Geobot. Phytotax. 39 (1): 103–104, f. 2, 1–5. 2004.

TYPE: ECUADOR. Imbabura. Munic. Cayambe, Volcán Cayambe, 78°55.6'W, 00°31.6'N, swamps below the refuge with *Loricaria* sp., *Festuca glumosa*, *Distichia muscoides* etc., 4450 m s.m., 20-X-2000, Stančík 4162 (Holotype: PRC; Isotypes: AAU, QCA).

Peruvian specimens examined: Dpto. Cusco, prov. La Convención, distrito Vilcabamba, forest towards the top of the Totorá-Purkay valley on the north side of

the river, 3 km east of the Totora-Purkay village, 4171 m, 13°10'50.2"S, 73°03'33.0"W, 7-V-2013, S. P. Sylvester 1955 (LPB!, USM!, Z!).

Notes: Found locally common in open *Polylepis pepeii* B. B. Simpson woodland intermixed with grazed puna grassland at the one site in distrito Vilcabamba where it was encountered. Previously known from Ecuador and Colombia (Stančík, 2003). Stančík & Peterson (2007) mention this species for northern Peru citing numerous specimens from the region of Cajamarca. Our specimens from southern Peru extends the latitudinal distribution of this species 900 km further south.

ROSACEAE

Aphanes parvula Gutte, Wiss. Z. Karl-Marx-Univ. Leipzig, Math.-Naturwiss. Reihe 34 (4): 455. 1985. Fig. 2a.

TYPE: PERU. Dpto. Junin, prov. Youli, La Oroya oberhalb Chancayllo, Berg mit *Puya rairnondii*, 3680 m, 5.4.1974, Gutte 2289ab (Holotype: LZ).

Peruvian specimens examined: Dpto. Cusco, prov. Calca, distrito Calca, grazed ground below the southwest facing crags of the Laguna Yanacocha 1.5 km east of Cancha Cancha village, Huarán, 4310 m, 13°14'25.4"S, 72°01'16.1"W, 25-III-2011, S. P. Sylvester 905 (CUZ!, Z!); distrito Calca, the northwest facing slope found to the immediate north of the prominent tower known by locals as "Kontorqayku" 5 km northeast of Huarán, 4311 m, 13°16'02.8"S, 72°01'13.1"W, 27-IV-2011, S. P. Sylvester 1186 (CUZ!, LPB!, Z!).

Notes: This species was found to be common to very common in grazed puna grassland and rocky open *Polylepis* woodland, amongst vegetation found in damp cracks. Although the type specimen

of this species comes from Peru, TROPICOS. ORG (2017) only provide distribution information for Bolivia (Jørgensen *et al.*, 2014, 2015 and onwards). Romoleroux (1996) also mentions this species to occur in Peru but does not cite specimens.

Lachemilla tanacetifolia Rothm., Notul. Syst. (Paris) 7: 9. 1938. Fig. 2b.

TYPE: COLOMBIA. "pic Tolima Lomas", 1844 Goudot 3 (Lectotype: P).

Peruvian specimens examined: Dpto. Cusco, prov. Urubamba, distrito Ollantaytambo, Abra Malaga, 1km southwest of Abra Malaga church nestled in a ravine on the other side of the ridge close to the main path leading along the mountainside from the church, 4429 m, 13°08'40.2"S, 72°18'14.7"W, 31-IX-2010, S. P. Sylvester 208 (CUZ!, LPB!, Z!); distrito Urubamba, Area de Conservacion Protegida Mantamay, 10 km up the valley from Yanahuara, by the side of Laguna Manalloqsa in the small valley 3 km east of Laguna Ipsaycocha, 20 m south of Laguna Manalloqsa on rocky slope, 4638 m, 13°12'00.9"S, 72°08'42.0"W, 6-II-2011, S. P. Sylvester 572 (CUZ!, Z!); prov. La Convención, distrito Vilcabamba, large prominent ledge on the south facing cliff at the end of the Totora-Purkay valley, 4 km east of the Totora-Purkay village, 4522 m, 13°11'00.3"S, 73°03'08.5"W, 1-V-2013, S. P. Sylvester 1873 (LPB!, USM!, Z!).

Notes: This species was found to be very common in grazed puna grassland and open *Polylepis* woodland intermixed with *Festuca* and *Calamagrostis* tussock grasses. Previously known from the paramos of Venezuela, Colombia and Ecuador (Romoleroux, 1996; Jørgensen & León-Yáñez, 1999; Luteyn, 1999). Luteyn (1999) and Romoleroux (1996) mention this species to occur in the northern paramos of Peru

but do not cite specimens. The specimens cited here thus represent the most southerly distribution records for this species.

VALERIANACEAE

Valeriana mandonii Britton, Bull. Torrey Bot. Club 18: 264. 1891. Fig. 2c.

TYPE: BOLIVIA. Sorata, Rusby 874 (Holotype: ?; Isotypes: K, NY, MICH, MO)

Peruvian specimens examined: Dpto. Cusco, prov. Calca, distrito Calca, prominent ledge situated on the southwest facing cliff face 1.5 km south (170°) of Cancha Cancha village, Huarán, 4522 m, 13°14'35.2"S, 72°01'14.1"W, 21-III-2011, *S. P. Sylvester* 816 (Z!); distrito Calca, grazed ground below the southwest facing crags of the Laguna Yanacocha 1.5 km east of Cancha Cancha village, Huarán, 4310 m, 13°14'25.4"S, 72°01'16.1"W, 25-III-2011, *S. P. Sylvester* 885 (CUZ!, Z!); distrito Calca, the grassy grazed land found to the immediate east of the prominent tower known by locals as "Kontorqayku" 5 km northeast of Huarán, 4255 m, 13°16'08.4"S, 72°01'06.6"W, 23-IV-2011, *S. P. Sylvester* 1138 (CUZ!, Z!); distrito Calca, the northwest facing slope found to the immediate north of the prominent tower known by locals as "Kontorqayku" 5 km northeast of Huarán, 4324 m, 13°16'03.2"S, 72°01'13.3"W, 27-IV-2011, *S. P. Sylvester* 1179 (Z!); distrito Calca, the southwest facing slope found to the immediate east of the prominent tower known by locals as "Kontorqayku" 5 km northeast of Huarán, 4223 m, 13°16'13.2"S, 72°01'05.7"W, 11-V-2011, *S. P. Sylvester* 1234 (CUZ!, Z!); prov. Urubamba, distrito Urubamba, Area de Conservacion Protegida Mantabay, 10 km up the valley from Yanahuara, by the side of Laguna Manalloqsa in the small valley 3 km east of Laguna Ipsaycocha, directly below crags 250°W of Laguna Manalloqsa, 4645 m, 13°12'01.1"S, 72°08'48.4"W, 5-II-2011, *S. P.*

Sylvester 549 (CUZ!, F!).

Notes: Found in a variety of habitats including rocky ground, heavily grazed puna grassland, tussock grassland, and *Polylepis* forest. Weberling (2005) cites the specimen *Stork* 10227 (F) for the Dpto. Junin, prov. Huancayo of Peru under the name *Valeriana mandonii* subsp. *andina* (Britton) Weberl. TROPICOS.ORG (2017) also mention the specimen *Percy Núñez* V. 10064 (MO) for the Santuario Histórico Machu Pichu, Lluhuchayor, between Huayllabamba and Warmihuañusca.

S. P. Sylvester 905. b. *Lachemilla tanacetifolia*, specimen uprooted, *S. P. Sylvester* 572. c. *Valeriana mandonii*, *S. P. Sylvester* 549.



Fig. 2. Photographs of some of the overlooked species records for Peru. a. *Aphanes parvula*,

Acknowledgements

This study was supported by The Leverhulme Trust, UK, the University of Zurich, and the SNSF [grant P2ZHP3_161988]. We thank Colin Hughes, Ihsan Al-Shehbaz, Juan C. Ospina, Nick Hind, Simon Pfanzelt, and Xenia Villavicencio for species determination or confirmation. ECOAN Peru and Washington Galiano are thanked for their logistical support during fieldwork in Peru. The CUZ, LPB and USM herbaria are thanked for allowing revision of specimens.

Literature cited

- Brako, L. & J. Zarucchi.** 1993. Catalogue of the Flowering Plants and Gymnosperms of Peru. Monographs in Systematic Botany from the Missouri Botanical Garden 45: 1–1286.
- Cuatrecasas, J.** 1978. Studies in Neotropical Senecioneae, Compositae. I. Reinstatement of genus *Lasiocephalus*. *Phytologia* 40(4): 307–312.
- García, E. & S. G. Beck.** 2006. Puna. In Moraes, M., Øilgaard, B., Kvist, L.P., Borchsenius, F. & Balslev, H. (eds.). *Botánica económica de los Andes Centrales*, pp. 51–76. Universidad Mayor de San Andrés, La Paz, BO.
- González, P.; M. I. La Torre & A. Cano.** 2011. *Deschampsia danthonioides* (Poaceae – Pooideae) un nuevo registro para la flora peruana. *Revista Peruana de Biología* 18 (2): 185–187.
- Heitkamp, F.; S. P. Sylvester; M. Kessler; M. D. P. V. Sylvester & H. F. Jungkunst.** 2014. Inaccessible Andean sites reveal human induced weathering in grazed soils. *Progress in Physical Geography* 38(5):576–601.

doi: <http://dx.doi.org/10.1177/0309133314544918>

- Huamantupa, I.; R. Vásquez; R. Foster; M. Cuba & G. Calatayud.** 2014. Adiciones de angiospermas a la Flora del Perú procedentes de los bosques Andino Amazónicos del sur peruano. *Revista Peruana de Biología* 21 (2): 163–170. <http://dx.doi.org/10.15381/rpb.v21i2.9819>
- Jørgensen, P. M. & C. Ulloa Ulloa.** 1994. Seed plants of the high Andes of Ecuador—A checklist. *AAU Rep.* 34: 1–443.
- Jørgensen, P. M. & S. León-Yáñez (eds.).** 1999. Catalogue of the Vascular Plants of Ecuador. *Monogr. Syst. Bot. Missouri Bot. Gard.* 75: i–viii, 1–1181.
- Jørgensen, P. M.; M. H. Nee & S. G. Beck (eds.).** 2014. *Cat. Pl. Vasc. Bolivia, Monogr. Syst. Bot. Missouri Bot. Gard.* 127(1–2): i–viii, 1–1744. Missouri Botanical Garden Press, St. Louis.
- Jørgensen, P. M.; M. H. Nee & S. G. Beck (eds.).** 2015 and onwards. *Catálogo de las plantas vasculares de Bolivia (adiciones)*. <http://www.tropicos.org/projectwebportal.aspx?pagename=Home&projectid=13> (accessed 13/1/2017).
- Kessler, M.; J. M. Toivonen; S. P. Sylvester; J. Kluge & D. Hertel.** 2014. Elevational patterns of *Polylyepis* tree height (Rosaceae) in the high Andes of Peru: role of human impact and climatic conditions. *Frontiers in Functional Plant Ecology*. doi: <http://dx.doi.org/10.3389/fpls.2014.00194>
- Linares, E.; J. Campos; W. Nauray; J. Vicente & A. Galán De Mera.** 2010. Nuevas adiciones a la flora del Perú, V. *Arnaldoa* 17 (1): 99–106.
- Luteyn, J. L.** 1999. Páramos, a checklist of plant diversity, geographical distribution, and botanical literature. *Mem. New York Bot. Gard.* 84: viii–xv, 1–278.
- Madriñán, S.; A. J. Cortés & J. E. Richardson.** 2013. Páramo is the world's fastest evolving and coolest biodiversity hotspot. *Frontiers in Genetics* 4: 192.

<http://dx.doi.org/10.3389/fgene.2013.00192>

- Montesinos-Tubée, D. B.; A. M. Cleef & K. V. Sýkora.** 2015. The Puna vegetation of Moquegua, South Peru: Chasmophytes, grasslands and *Puya raimondii* stands. *Phytocoenologia* 45 (4): 365–397.
- Ospina, J. C.; S. P. Sylvester & M. D. P. V. Sylvester.** 2016. Taxonomic delimitation of the *Festuca setifolia* complex (Poaceae) in southern South America and a new species for the Peruvian Andes. *Systematic Botany* 41(3): 727–746. doi: <http://dx.doi.org/10.1600/036364416X692398>
- Pfanzelt, S.; S. P. Sylvester; L. Ammann & M. D. P. V. Sylvester.** 2015. *Gentianella viridiflora* (Gentianaceae), a new species from the Peruvian Andes. *Phytotaxa* 222 (4). doi: <http://dx.doi.org/10.11646/phytotaxa.222.4.6>
- Romoleroux, K.** 1996. 79. Rosaceae. 56: 1–151. In G. W. Harling & L. Andersson (eds.) *Fl. Ecuador*. University of Göteborg, Göteborg.
- Rodríguez, E. F.; R. Vásquez; R. Rojas; G. Calatayud; B. León & J. Campos.** 2006. Nuevas adiciones de angiospermas a la flora del Perú. *Revista Peruana de Biología* 13 (1): 129–138.
- Salvador, F.; M. Ángeles & S. Ríos.** 2008. Tres nuevos registros del género *Carex* (Cyperaceae) para el Perú y adiciones a la flora andina del departamento de Huánuco. *Revista Peruana de Biología* 15 (2): 83–92.
- Smith, A. R.; B. León; H. Tuomisto; H. van der Werff; R. C. Moran; M. Lehnert & M. Kessler.** 2005. New records of pteridophytes for the Flora of Peru. *Sida* 21: 2321–2341.
- Soreng, R. J. & C. W. Greene.** 2003. *Calamagrostis*. 48: 191–227. In R. J. Soreng, P. M. Peterson, G. Davidse, E. J. Judziewicz, F. O. Zuloaga, T. S. Filgueiras & O. Morrone (eds.) *Catalogue of New World Grasses (Poaceae): IV. Subfamily Pooideae*, Contr. U.S. Natl. Herb. Smithsonian Institution, Washington, D.C.
- Soreng, R. J.; G. Davidse; P. M. Peterson; F. O. Zuloaga; E. J. Judziewicz; T. S. Filgueiras & O. Morrone.** 2003 and onwards. On-line taxonomic novelties and updates, distributional additions and corrections, and editorial changes since the four published volumes of the *Catalogue of New World Grasses (Poaceae)* published in *Contr. U.S. Natl. Herb.* vols. 39, 41, 46, and 48. <http://www.tropicos.org/Project/CNWG>: In R. J. Soreng, G. Davidse, P. M. Peterson, F. O. Zuloaga, T. S. Filgueiras, E. J. Judziewicz & O. Morrone (eds.) *Internet Cat. New World Grasses*. Missouri Botanical Garden, St. Louis.
- Stančík, D. & P. M. Peterson.** 2007. A revision of *Festuca* (Poaceae: Loliinae) in South American Paramos. *Contr. U.S. Natl. Herb.* 56: 1–184.
- Stančík, D.** 2003. Las especies del género *Festuca* (Poaceae) en Colombia. *Darwiniana* 41(1-4): 93–153.
- Sundue, M.; S. P. Sylvester; M. Kessler; B. Lyons; T. A. Ranker & C. W. Morden.** 2015. A new species of *Moranopteris* (Polypodiaceae) from inaccessible ledges in the high Andes of Peru. *Systematic Botany* 40 (3):652–657. doi: <http://dx.doi.org/10.1600/036364415X689375>
- Sylvester, S. P.** 2014. *Bartsia lydiae*, a new species of *Bartsia* sect. *Laxae* (Orobanchaceae) from the southern Peruvian Andes with a revised key to *Bartsia* sect. *Laxae*. *Phytotaxa* 164 (1): 041–046. doi: <http://dx.doi.org/10.11646/phytotaxa.164.1.4>
- Sylvester, S. P.; M. D. P. V. Sylvester & M. Kessler.** 2014a. Inaccessible ledges as refuges for the natural vegetation of the high Andes. *Journal of Vegetation Science*. doi: <http://dx.doi.org/10.1111/jvs.12176>
- Sylvester, S. P.; M. D. P. V. Sylvester & M. Kessler.** 2014b. The World's highest vascular epiphytes found in the Peruvian Andes. *Alpine Botany* 124 (2): 179–185. doi: <http://dx.doi.org/10.1007/s00035-014-0130-2>
- Sylvester, S. P.; R. J. Soreng; P. M. Peterson & M. D. P. V. Sylvester.** 2016a. An updated checklist and key to the open-panicked species of *Poa* (Poaceae) in Peru including three new species, *Poa ramoniana*, *Poa tayacajaensis*, and *Poa urubambensis*. *Phytokeys* 65: 57–90. doi: <http://dx.doi.org/10.3897/phytokeys.65.7024>
- Sylvester, S. P.; D. Quandt; L. Ammann & M. Kessler.** 2016b. The World's smallest Campanulaceae: *Lysipomia mitsyae* sp. nov. *Taxon* 65 (2): 305–314. doi: <http://dx.doi.org/10.12705/652.7>
- TROPICOS.ORG.** 2017. Missouri Botanical Garden. <http://www.tropicos.org> (accessed 13/01/2017).
- Ulloa Ulloa, C.; J. Zarucchi & B. León.** 2004. Diez años de adiciones a la flora del Perú: 1993–2003. *Arnaldoa*, Ed. Especial: 7–242. <http://dx.doi.org/10.5962/bhl.title.63538>
- Vásquez, R.; R. Rojas & E. Rodríguez.** 2002. Adiciones a la Flora Peruana: especies nuevas, nuevos registros y estados taxonómicos de las Angiospermas para el Perú. *Arnaldoa* 9 (2): 43–110.

- W3TROPICOS-Peru Checklist.** 2017. Missouri Botanical Garden. <http://www.tropicos.org/Project/PEC> (accessed 13/01/2017).
- W3TROPICOS-Paramo Flora.** 2017. Missouri Botanical Garden. http://www.mobot.org/MOBOT/Research/paramo_flora.shtml (accessed 13/01/2017).
- Weberling, F.** 2005. Notes on South American Valerianaceae III. Feddes Repertorium 116: 294–312.
- Wilcox, B. P.; F. C. Bryant; D. Wester & B. L. Allen.** 1986. Grassland communities and soils on a high elevation grassland of Central Peru. Phytologia 61 (4): 231–250.
- Zuloaga, F. O. & O. Morrone.** 1997. Catálogo de las plantas vasculares de la República Argentina. Monogr. Syst. Bot. Missouri Bot. Gard. 74(1–2): 1–1331.